

2025
Product Catalog



ROTH
EQUIPMENT & SUPPLIES

Rugged Equipment • Priced Right • Since 1956!

Table of Contents

Item	Page #
About Us.....	3
ATV Dump Trailer.....	28
Barn Limer	22
Buddy Hutch.....	11
Calf Hutches	4-5
Calf Housing Accessories.....	12
Clean Chute Tube	18
Conveyor Belting.....	17
Dryzone Slatted Floor	9
Dual XL Hutch	11
Feed Cart.....	20
Flex Hutch	10
Flex Pen Options	8
Foot Bath.....	21
Grain Feeder.....	9
Grate Scraper.....	21
Gutter Grate	21

Item	Page #
Harrow	25
Hay Elevator.....	23
Item Descriptions.....	26
Manure Spreader	24
Mats and Accessories	13-15
Open-Air Flex-Pen	7
Poly Clean Chute Funnel.....	18
Poly Liner	19
Poly Scraper.....	22
Replacement Chain	17
Silo Hopper	18
Single Chain Elevator.....	16
Starter Pen.....	10
Superior 33 Mattress.....	13
Ultra-Flex Pen	6
Vinyl-Strip Door	19

Contact

ROTH MANUFACTURING CO.

CALL

1-800-472-2341

FAX

1-800-677-2341

EMAIL

info@loyal-roth.com

MAIL

P.O. BOX 248
Loyal, WI 54446

HOURS

M-F: 7:30 - 12:00 (CST)
12:30 - 5:00 (CST)

STOP IN

314 E. Elm Drive (Hwy 98 E)
Loyal, WI 54446

About Us

Roth Equipment & Supplies has fabricated farm equipment under the “**Loyal**” brand name for nearly 70 years.

Since 1956, our family-owned firm has been providing farmers with better-engineered, quality-constructed farm equipment at a competitive price.

Our modern facilities are located on 15-acres in Loyal, Wisconsin. Over 47,000 square feet of plant space houses our research and development, manufacturing, warehousing and office functions.

Our people-oriented staff is eager to serve you. Every order received is processed with special attention. Customers' orders, no matter what size, are speeded through our efficient and responsive system. Most deliveries are shipped within 24-hours. We try to give our customers the best service possible.

The Roth commitment to quality is reflected in the rugged dependability and performance built into **Loyal** products. Our reputation proves it!



Calf Hutches

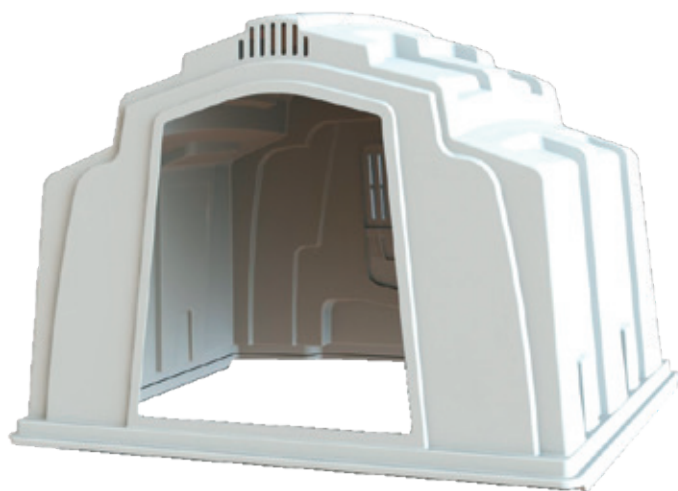
SL Calf Hutch



EXL Calf Hutch



Group Calf Hutch



Deluxe Standard SL Calf Hutch

- Ideal for growth periods of 6 to 8 weeks
- Most popular calf hutch for weaned calves up to 8 weeks
- Easy to clean



Specifications:

Overall Size: 49"W
x 87"L x 55"H

Weight: 90 lbs.

Deluxe Large EXL Calf Hutch

- Accommodates longer growth periods of 8 to 12 weeks
- Rear of the hutch stays drier and warmer on cool days, which provides better protection from wind, rain and snow



Specifications:

Overall Size: 62.5"W
x 97.5"L x 56"H

Weight: 119 lbs.

Group Calf Hutch

- Designed to ease transition from individual to group housing
- Swing-up rear bedding door makes it easy to add bedding and control ventilation



Specifications:

Overall Size: 106"W
x 89"L x 79"H

Weight: 250 lbs.

Calf Hutches



All-in-1 Rear Door

Airflow is critical for calf health. The new All-in-1 Rear Door improves upon the previous 3-in-1 door.

- Increased air flow capacity by 82%
- 30% more access for bedding and feed
- Easy to open & close rear flap
- Door swings out of way (can be left open)



The Only Manger with Splash Guard

- Pail stoppers keep calves from knocking out pails
- Splash guard helps keep feed dry and water clean
- Manger bolts to inside wall, you choose location – side feed door or rear door

New Larger Opening for Bedding & Feed

- Door closes for complete weather protection
- Lift metal sliding latch to lower door cover and increase ventilation
- Vertical ribs provide calf safety and durability
- New larger 21" opening makes for easier access to rear of hutch

Stay-Open Side Door

- Group hutches side-by-side for faster feeding
- Alternate right or left side doors to reduce walking between hutches by up to 50%
- Side door is larger for easier access – wind won't blow open closed door

Ultra Flex-Pen

Stand-Alone Housing

- Simply transform from single to group housing
- New large rear rotary-vent provides optimal air flow
- New bi-swing door opens in and out
- Rear panel opens with easy removal of rod
- New glide points make setup and tear down quicker
- Choose from 5', 6', or 7' side panels
- Side panel air vents provide greater air-flow
- Visit us online to see full list of available accessories



Bottle and bottle holder
sold separately.

Pair-house calves by simply removing the
center panel and installing the crossbar



Large easy to grip handle



Mount pens to wall with optional
wall-mount bracket



Open-Air Flex-Pen

New, open metal design allows greater visibility of calves and better air flow!

NEW!

48" Width

Now available in two widths:

36" Width



More Visibility & Better Airflow!

The new Open-Air Flex-Pens offer all the same great benefits of the Ultra Flex Pen but are now available with metal fronts and backs. Both front and rear panels are made of high-grade galvanized steel which assists in better air circulation. The open design allows convenient viewing to better monitor your calves' health.



Just like the Ultra Flex-Pen, this system simply transforms from single to group housing. Side panels can be effortlessly detached and replaced by the Group Housing Crossbar to pair to calves in a larger pen. Plus, with 2 options for widths and 3 different length sizes, this system provides you with the most options to fit your setup perfectly!

- High-grade galvanized steel front panel with pails, pail rings and optional bottle feeding
- Slam latch keeps front door secure
- Bi-swing front door

Flex-Pen Options

**36" Wire Front
AGRI-7129**



**48" Wire Front
AGRI-7127**



**48" Plastic Front
AGRI-7110**



**36" Wire Back
AGRI-7130**



**48" Wire Back
AGRI-7128**



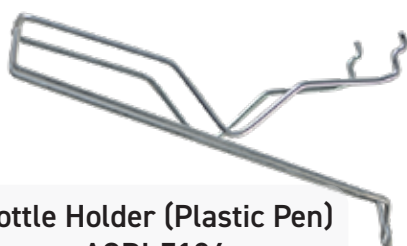
**48" Plastic Back
AGRI-7108**



**Side Panel
AGRI-7105, AGRI-7106, AGRI-7107**



**Group Housing Crossbar
AGRI-7113, AGRI-7114, AGRI-7115**



**Bottle Holder (Plastic Pen)
AGRI-7124**



**Bottle Holder (Metal Pen)
AGRI-7024**

**Back Wall Mount
AGRI-7012**



Grain Feeder



- High-capacity feeder holds up to 33 lbs. of grain
- Adjustable internal feed control plate for precise feeding
- Versatile upper & lower brackets ensure the feeder remains in place, suitable for various hanging scenarios
- Ideal for tough farm conditions

Accommodates various mounting options thanks to the bottom bracket which is designed with multiple holes that ensures compatibility with multiple sized openings.



Dryzone Slatted Floor



- Modular slatted platform for floor plan flexibility
- Enhance animal welfare
- Reduces bedding consumption
- Quick-lock legs elevate platform for drainage and airflow
- Front/Rear brackets keep pens and hutch aligned
- Textured surface aids traction

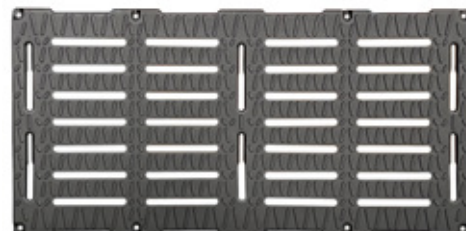


Two floor sizes available:

8'L x 2'W



4'L x 2'W



Flex-Hutch™

- Cleans and sanitizes easily, so you can put it back in service with zero downtime
- Simplifies daily chores such as bedding, feeding, watering and cleaning
- Place directly on ground or elevate on skids to optimize drainage
- Adjustable, hinged Flex Roof Cover™ opens in one easy movement
- Adjustable rear door allows single-motion ventilation control
- Unit includes 8-quart buckets, and pail holders
- 10-year manufacturer's limited warranty

Two-Unit Flex-Hutch



Bottle and bottle holder
sold separately.

Three-Unit Flex-Hutch

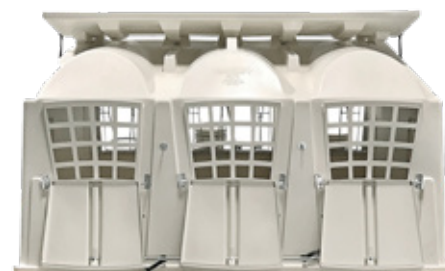


Bottle and bottle holder
sold separately.

Easy to Open Doors

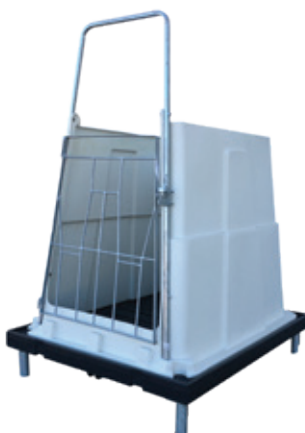


Single Motion Rear Vents



Starter Pen

- Ideal for new born calves up to 1-week old before transitioning to pens or hutches
- Provides greater control over monitoring calf health
- Easier to teach calves to drink properly
- Top and bottom airflow vents
- Molded in one piece
- Made from high-impact polyethylene
- Easy to clean
- Elevated & moveable pens can be flipped up for better cleaning
- 10-year limited warranty
- Choice of: starter pen only, starter pen with slatted floor and either legs or wheels



Dual XL Hutch™

- Larger hutch ideal for pair-raising calves
- Promotes companionship and competitiveness to help achieve optimal growth



Bottle and
bottle holder
sold separately.

Buddy Hutch

- For calves 0-14 weeks old
- Modified Group Hutch helps newborn calves accelerate growth
- Calves can be housed together or separate, based on your preference
- Includes 4 pails, 4 rings, awning, bi-swing doors and rear grid guard
- Optional accessories include: weather cover extension, removeable center panel, lift kit, bottles, and bottle holders



Calf Housing Accessories

EXL/SL Hutch Accessories

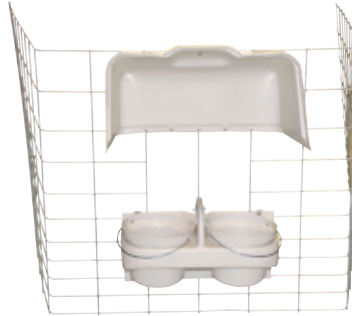
Storm Door



PVC Pipe
Front
Enclosure



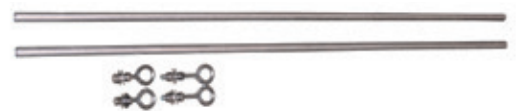
Weather
Cover and
Pail Manger



Tether Cable
Kit



Fence
Attachment
Hardware



Group Hutch Accessories

Narrow Pen System



Wide Pen System



Lift Kit



Hook Over Trough



Other Accessories

2, 3, 4 Qt. Bottles



8 Qt. Pail



Pail Ring



Starter Bowl



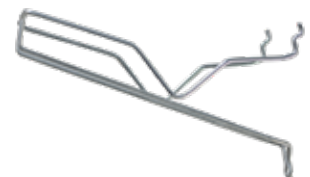
Wire Bottle Holder



Plastic Bottle Holder



Wire Bottle Holder (Flex Pen)



Superior 33 Mattress



For Tie-Stalls and Free-Stalls

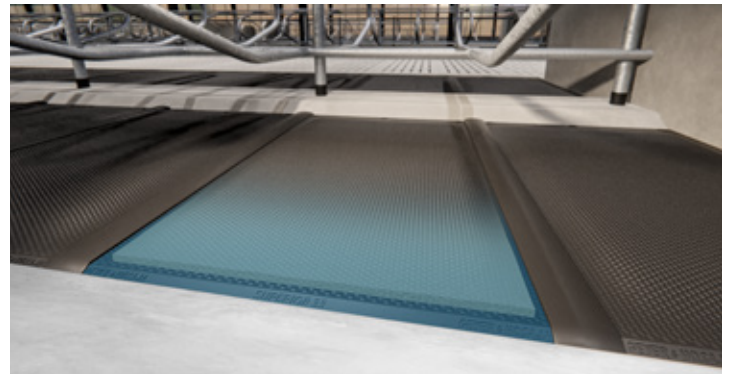
Give your cows the best rest they've ever had! Introducing the Superior 33 Mattress. Designed around giving your cows the most comfortable and supportive surface to stand and lie down on. Superior 33 helps reduce the likelihood of hoof problems and hock injuries. Also, this mattress helps maximize your farm's productivity, as more comfortable cows produce more milk! Call or email us today to learn how this mattress can help your cows' productivity and your farm's bottom line!



Features & Benefits

- 30MM of high-quality foam enclosed in a tightly sealed rubber mat allows for a 1-piece mat that is both durable and extremely soft
- Innovative combination of foam and robust rubber materials guarantees superior resting comfort
- Mattress provides up to 28MM of deflection
- Thermal insulation properties translate into maintaining the correct body temperature, which increases productivity

- Non-slip structure provides stability to reduce the likelihood of injury
- The design and simple installation make it easy to keep the mattress clean
- Non-slip structure provides improved stabilization to reduce the likelihood of injury
- Mat size: 48" x 72"
- Tie-stall limited warranty: 5-year prorated
- Free-stall limited warranty: 10-year prorated



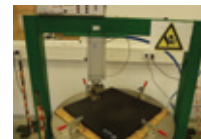
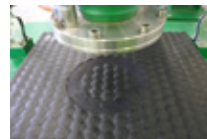
Premium Cow Comfort at an Affordable Price!



G&H Cow Mats



- Cow mats designed and manufactured from one of the largest rubber manufacturers in Europe
- Mats feature special anti-slip surface design – superior traction
- Simple installation – only requires 3-anchors (on front end)



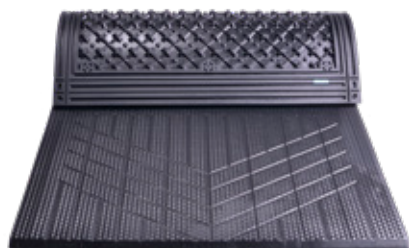
- Mats are DLG tested and certified – sets standards for mats
- Special tests simulates up to 10 years of use

G&H 1.2



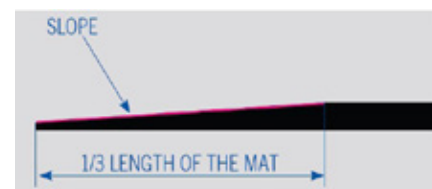
- For tie-stalls and free-stalls – 67", 69", or 71"
- 1-1/8" thick, with pebbled top surface
- Beveled rear edge provides soft, safe, non-stumble design
- Advanced rubber formulation – increased cow comfort
- Ribbed bottom surface – better cushioning and softness
- Tie-stall warranty – 5-yr prorated
- Free-stall warranty – 10-yr prorated

G&H 1.4



- For free stalls – 48" width, available lengths – 48" x 71"
- 1-1/4" thick, with pebbled top surface – anti-slip
- Mild slope (rear 1/3 of mat) promotes drainage
- Ribbed bottom surface – better cushioning and softness
- Bottom sealing lips restricts entry of moisture and debris

- Tie-stall warranty – None
- Free-stall warranty – 10-yr prorated



G&H 1.6



- For tie-stalls and free-stalls – 48" width, available lengths – 67", 69", or 71"
- 1-1/4" thick, with pebbled top surface
- Advanced rubber formulation – increased cow comfort
- Softer cushioning feel, yet still strong and durable
- Bottom sealing lips restricts entry of moisture and debris
- Tie-stall warranty – 5-yr prorated
- Free-stall warranty – 10-yr prorated

Humane Rubber Mat



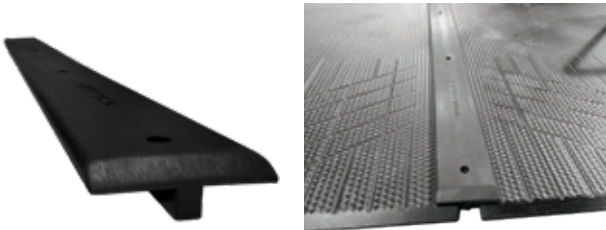
3/4" - 100% Rubber Mat

- Considerably heavier than most other mats at 106 lbs.
- Flat on both sides, clings to concrete
- Textured, non-skid, non-porous surface makes for better footing.
- Cushion comfort provides cow knee, hock and udder protection
- Easier to clean – no ribs to collect manure – reduces bacteria growth

Accessories

T-Bar Hold Downs

- Holds down sides of mats
- Seals and fills space between mats
- Prevents entry of moisture and fine bedding
- Easier stall cleaning
- Simple to install



Brisket Board

- Poly brisket boards are strong and don't splinter like wood
- Less expensive than poured cement brisket boards
- Smooth, rounded surface helps promote natural leg extension



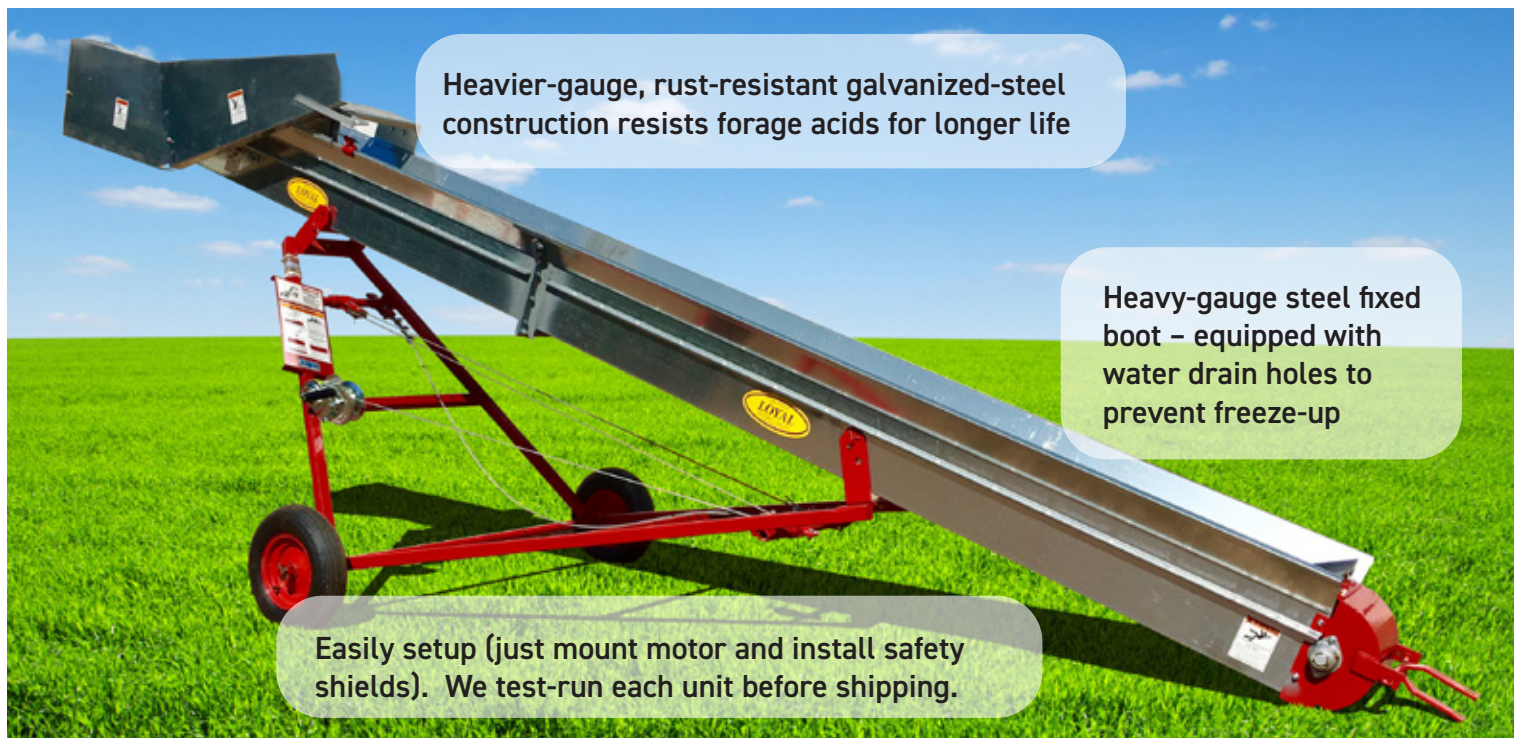
Cozy Cow Top Wear Cover



Tough Top Wear Cover

- For use over rubber filled mattresses
- Heavy-duty – nonwoven (high-strength)
- Water-repellent
- UV stabilized to resist sunlight (provides greater protection in free-stall applications)

Loyal Silage Elevator



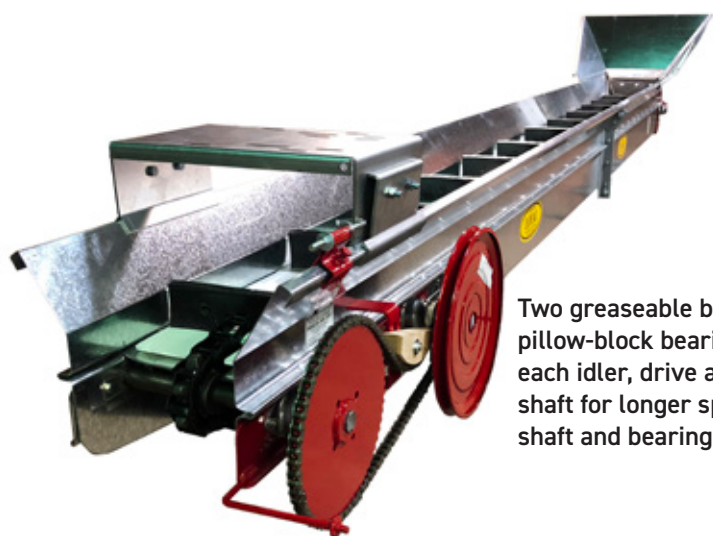
Heavier-gauge, rust-resistant galvanized-steel construction resists forage acids for longer life

Heavy-gauge steel fixed boot – equipped with water drain holes to prevent freeze-up

Easily setup (just mount motor and install safety shields). We test-run each unit before shipping.

- Loyal elevators are preferred for their rugged but simple construction – they provide economical and smoother, more trouble-free operation for years of hard use
- Sturdy, detachable or pintle conveyor chain is tempered hard for longer wear
- Heavy cast-iron, drive and idler shaft, conveyor-chain sprockets – sprocket design helps prevent material buildup between chain and sprocket
- Sliding motor mount may be set at any point along top elevator flange (underslung mounts also available)

E-Z Open
Cleanout Hole
with Swinging
Door provides
quick access to
boot



Two greaseable bronze pillow-block bearings on each idler, drive and cross shaft for longer sprocket, shaft and bearing life

Silages and Haylages

9" WIDTH – will handle most sizes of silo unloaders
11" and 13" WIDTH – use where two large silo unloaders are discharging into elevator at once.

Small Grains and Coarse Ground Feeds

9", 11" or 13" elevators will handle well. Do not position elevator at an angle greater than 45°

Whole Ear Corn

A 9", 11" or 13" elevator can be used

Wet Shell Corn (Whole or Ground) and Ground Ear Corn

A 9", 11" or 13" elevator can be used.

Meals

We recommend an 11" or 13" elevator. Do not overload, especially for soybean meal

Manure

We recommend a 9", 11" or 13" elevator

Canning Waste

Use a 9", 11" or 13" elevator

Saw Mill Saw Dust Shavings

We recommend a 9", 11" or 13" elevator

Replacement Conveyor Chain

Pintle Chain (with flights)



Detachable Bale Elevator Chain (with flights)



Replacement Pintle Couplers



Steel Detachable Chain (less flights)



Pintle chain (less flights) 10-Foot Rolls



Replacement Detachable Couplers

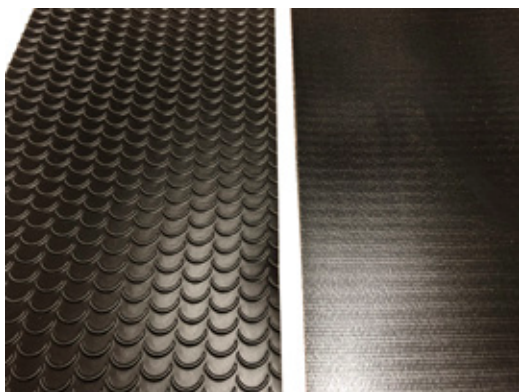


Steel Detachable Chain (with flights)



We've seen chain with a very-low tensile strength being marketed. The tensile strength on 667H chain we had tested was only 5,500# versus 9,500# on the chain that we sell.

Conveyor Belting



- Smooth or crescent belting
- Low temp rated – to minus 40°
- Greater chemical and cracking resistance than PVC

Poly Clean – Chute Funnel



- Simple to install in doorway (with clean-chute tube all the way to bottom of silo chute)
- Smooth and slick – won't plug
- Super-tough poly funnel won't rust or crack – even at extreme temperatures.
- UV stabilized to resist sunlight
- More durable than fiberglass
- Flange can be easily cut with any wood-type saw to fit your silo door

Clean Chute Tube



- Thicker 8 mil. (heavier than lighter 6 mil.) for better rip resistance... longer life.
- Fits up to 13" discharge tube

Poly Silo Hopper



- Directs silage and haylage into conveyor, cart or mixer
- Prevents feed losses
- Ends problems from flying material
- Eliminates feed hang-up on bottom silo rungs and rings, and on electrical equipment
- Handles high moisture corn and even haylage with no plugging

Poly Liner



- Many uses: mangers, feed bunks, conveyors, parlor & milkhouse walls, manure spreaders, gutters, and much more
- Available in rolls (up to 100' long) and sheets (10' long)
- Thickness 1/8", 3/16", and 1/4"
- Makes old mangers, walls and equipment better than new
- Extends life of any new surface – protects from chemicals, moisture, and wear
- Will not harbor bacteria, keeps feed fresher longer.

Vinyl-Strip Door



- Overlapping, flexible vinyl strips, part easily – but just enough to let people, animals, and equipment through – then close automatically
- Clear vinyl – for safer 2-way visibility
- Light filters in easily – brightens building interior
- Use on any size opening... from your dog house or milk-room door... to your feed room, barn or machine-shed door (as high as 14' and any width)
- Excellent low-temperature flexibility
- UV stabilized to prevent yellowing and cracking
- Low cost... quick and simple to install
- Low maintenance... clean occasionally (individual strips can be quickly and inexpensively replaced if ever damaged)
- Thicker, heavy-duty vinyl – resists bruising – retains it's shape

Feed Cart

7 & 11 Bu. Carts are ideal for narrow alleys or sharp turns.

14 Bu. – 26 Bu. are wider and carry more feed or bedding.



7 Bu.



11 Bu.



14 Wide Bu.



14 Bu.



20 Bu.



26 Bu.

- High-strength polyethylene is lightweight and much more durable than plywood, steel or fiberglass
- Superior performance has been proven – used for years in heavy-duty industrial applications
- Excellent stress cracking and puncture resistance – even at extreme temperatures
- Special rounded-bottom design for faster unloading and dumping. No sharp corners or seams to catch forks, shovels or scoops.
- Carts quickly turn in a stationary circle on large, rugged, swivels with grease fittings
- Easier to sanitize – slick, smooth surface both inside and out, wipes or washes clean in minutes

24" Poly-Tuf Feed Carts

- Rolls easier than a smaller wheel cart over uneven floors, especially with heavier loads
- Much easier to push
- Big, heavy duty air tires (tube-type)
- Thicker, 3/8" dia., solid, welded spokes...won't rust or bend from animal contact, unlike lighter wire spokes



20 Bu.

Loyal Poly Footbath



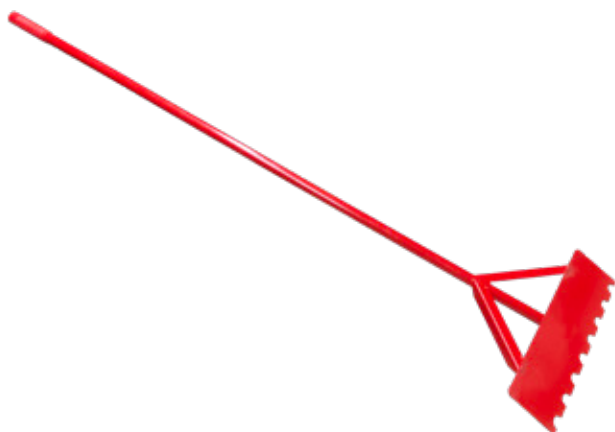
- Quick and easy way to clean and disinfect cattle's feet
- No wood frame needed – self-supporting
- Cross-rib, safety-grip bottom opens hooves wider, helps with faster healing
- Washing action of footbath removes damaging material from feet – helps prevent buildup of dirt and manure between cleats
- High-density, black, all poly – won't rust, rot, puncture or crack, even at extreme temperatures
- Available in two sizes: 32" x 78" x 6" & 54" x 84" x 6"

Loyal Gutter Grate



- Keep cows out of gutter and their tails drier... protects legs and udders
- Saves on bedding – keeps bedding out of slurry
- Ideal for problem and freshening cows. 4' grates can be moved to where needed
- Side angles are thicker for longer life... wider to adjust to differences in your gutter width
- Sturdy 3/4" cross rods – spaced at 16" intervals to prevent grates from bowing
- Grates made with 1/8" to 1/4" side clearance
- Unpainted steel finish

Loyal Grate Scraper



- Clean grates faster and easier
- Specially designed to effectively clean our grates
- Works best when grates are cleaned frequently
- Rake-type unit takes off dry buildup
- Notched, heavy-gauge steel bottom slips over grate rods
- Sturdy, steel handle for easy pushing...rubber grip handle
- Available for different-width grates

Loyal Poly Scraper



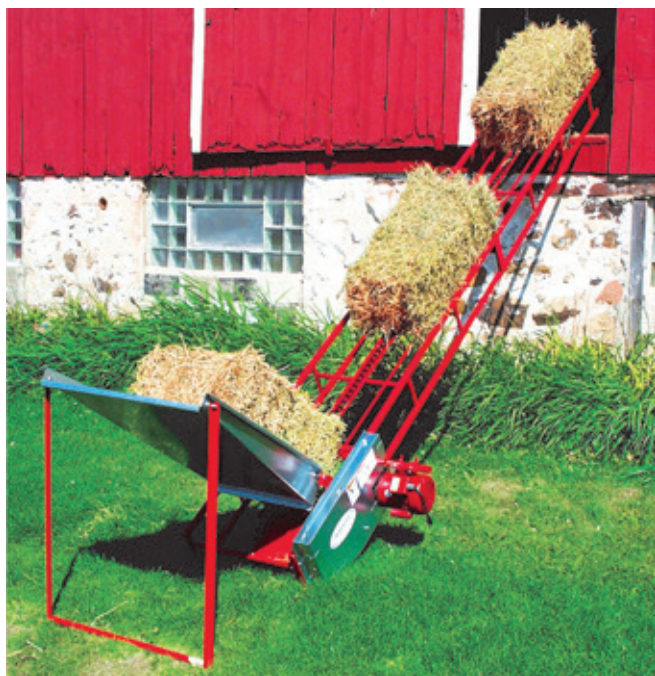
- High-strength, UHMW poly is lighter and more durable than steel
- Oversize lightweight 8" x 30" blade is a real work-saver for cleaning floors and walkways
- Poly is quieter - no steel-clatter noise to disturb cows
- Ideal for snow – slick, non-porous surface helps prevent snow from sticking to blade – rolls right off
- Extremely tough – resists heat, cold, sunlight and warpage
- Poly's superior performance has been proven – used for years in heavy-duty industrial applications
- Excellent stress cracking and puncture resistance – even at extreme temperatures
- Widths available – 10", 24", 30", 48"

Loyal Barn Limer



- 65 lbs. capacity hopper – will lime average 120' barn
- One trip up-and-down 8' walkway will completely cover it
- Easy to operate lever-action handle controls slide-gate
- Heavy-gauge steel hopper – tapered for full feedout
- Heavy-steel rotating agitator – no wire or plastic agitators to twist, bend or break
- Bright-red enamel finish – powder coated for corrosion resistance
- Large 10" spreading disc spreads evenly – prevents excessive dusting
- Rolls smoothly on two 8" x 1.75 semi-pneumatic tires

Hayrite Bale Handling System



- Choose from either standard duty (18 ga.) or extra heavy duty (15 ga.) elevators
- Custom make your own bale handling system to fit your specific needs
- Basic elevator includes a drive unit, plus an end section with sprocket and chain tightener
- Basic Elevator can be lengthened by adding interchangeable 4' or 8' long extensions.
- Chain equipped with raised links every 24" for more positive movement
- Bronze, pillow-block bearings on drive unit – self-aligning with grease zerks
- Permanently-lubricated, sealed ball-bearing idler sprockets
- Powder-coated bright red finish – for longer life

Heavier, more dependable return-chain guides. Prevents sagging, catching, twisting and stretching – increases chain life.



Conveyor-chain track has exclusive double-formed-bend design for extra rigidity. Prevents sagging and bending common with other single formed-bend tracks.

Full Line of Accessories Available



Bale Chute Pan – 4'

Hinges to elevator, rests on its own stand or tips back against wagon or truck for easy unloading. Made of heavy, galvanized steel.



Bale Chute (Grate Type – 6')

Hinges to elevator – tips back against wagon or truck for easy unloading. Long-tapered design automatically lines up each bale to prevent them from tipping or turning while on elevator.



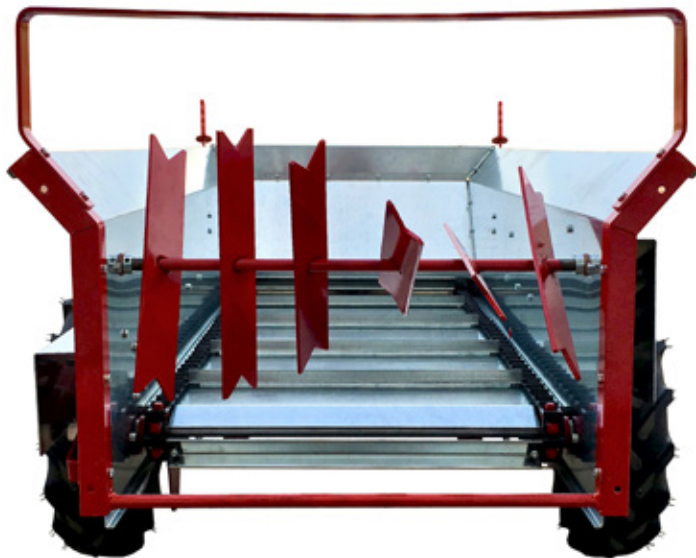
Transport

Engineered for better balance and greater strength – now you can move your elevator with ease to exactly where you want it. Tapered roller bearings – speed up to 20 MPH.

Loyal 23 Bu. Manure Spreader

Makes manure disposal faster and easier, can cut stall cleaning time by up to 50%!

At 46.5" wide, the spreader fits through most doorways and can be pulled right to the stall for loading.



- No belts to slip – apron chain is ratchet-driven by one wheel... beater is chain-driven by opposite wheel
- Simple to operate – up front controls for apron chain and beater
- Well balanced – easy to move by hand
- Ideal for 1 – 6 stalls
- Spreading takes about a minute depending on load and speed
- Ground driven (no-PTO)
- Any 10 HP garden tractor can pull

'Bear-claw' beaters quickly shred and spread all types of manure (including that mixed with straw or hay), plus shavings, grass clippings and compost.

Dimensions

Weight: 455 lbs.
Overall Length: 101"
Overall Width: 46.5"
Overall Height: 32.25"



Loyal Multi-Use Harrow

Use alone... or behind farm implements for 1-pass coverage, pull with your ATV, lawn tractor, tractor or pickup (only requires 1 HP per ft. of width for the mini-harrow... 2 HP per ft. for other models)



Ideal for Horse Owners & Hobby Farmers

- Aerate & dethatch pastures, lawns
- Loosen & smooth paths and driveways
- Break up & level heavy soil
- Prepare better seed beds
- Work-in fertilizer & seed
- Incorporate herbicides
- Harrow widths 4'-14'
- Harrow Lengths 4'-8'
- Scatter manure droppings
- Special design prevents tines from spreading apart in center – heavy residue is quickly surfaced without clogging or bunching

Optional 3-Point Lift

- Enables harrow to be quickly and easily moved to & from fields
- Allows operator to back up with harrow
- Easy to attach & store
- Includes tubular-steel frame, chrome-plated chain lengths and required hardware (shipped unassembled)
- Minimum harrow length of 8' required for 3-point lift



Pull forward, with tines pointed slightly back



Pull backwards, with tines pointed further back



Turn over



*Rake & smooth in 1 pass.
Sections work independently*

Item Descriptions & Numbers

Calf Hutches	
EXL Calf Hutch	EXL-LEFT
	EXL-RIGHT
SL Calf Hutch	SL-LEFT
	SL-RIGHT
Group Hutch	AGRI-4033
2-Unit Flex Hutch	AGRI-8002
3-Unit Flex Hutch	AGRI-8001
Buddy Hutch	AGRI-4060
Dual XL Hutch	AGRI-1047
Calf Hutch Accessories	
SL Storm Door	AGRI-2062
EXL Storm Door	AGRI-1062
SL PVC Pipe Enclosure	AGRI-2041
EXL PVC Pipe Enclosure	AGRI-1041
Weather Cover	AGRI-4013
Fence Mount Double Bucket Manger	AGRI-1048D
SL Tether Cable Kit	AGRI-2017
EXL Tether Cable Kit	AGRI-1017
Fence Attach. HDWE	AGRI-2036
SI Bottle Holder	AGRI-2002
Plastic Fence Mount Bottle Holder	AGRI-2003
Wire Fence Mount Bottle Holder	AGRI-7024
2-Qt. Bottle	AGRI-1070
3-Qt. Bottle	AGRI-1071
4-Qt. Bottle	AGRI-1074
8-Qt. Replacement Pail	AGRI-1049H
Large Starter Bowl - 11" Top Diameter	AGRI-1066
Group Hutch Accessories	
Narrow Pen System 108"W x 192"L	AGRI-1033F
Wide Pen System 138"W x 192"L	AGRI-1034F
Hook Over Trough	AFP-800
Lift Kit	AGRI-4034N
Buddy Hutch Accessories	
Weather Cover Extension	AGRI-4077
Center Panel	AGRI-4078
Lift Kit	AGRI-4034N
Calf Pens	
Plastic Front Panel	AGRI-7110
Plastic Rear Panel	AGRI-7108
5' Side Panel	AGRI-7105
6' Side Panel	AGRI-7106
7' Side Panel	AGRI-7107
48" Metal Front Panel	AGRI-7127
48" Metal Rear Panel	AGRI-7128
36" Metal Front Panel	AGRI-7129
36" Metal Rear Panel	AGRI-7130
Calf Pen Accessories	
5' Crossbar	AGRI-7113
6' Crossbar	AGRI-7114
7' Crossbar	AGRI-7115
Wall Mount Channel	AGRI-7012
Back to Back Bracket	AGRI-7126
Ultra Flex Bottle Holder	AGRI-7124
Hanging Grain Feeder	AGRI-2444
Starter Pen	
Starter Pen	AGRI-6000B
Plastic Slatted Floor	AGRI-6001
Metal Legs for Elevated Starter Pen	AGRI-6003-KIT
Wheels for Moveable Starter Pen	AGRI-6004-KIT

Mats	
Superior 33 Mattress	GH33-4714X71
Humane 3/4" Mat - 48" x 72"	MAA8200
Nail Anchors 1/4" x 2" Box of 100	TAP8204B
DB 1.2 - 1-1/8" Thick x 47-1/4"W x 67"L	DB12-4714X67
DB 1.2 - 1-1/8" Thick x 47-1/4"W x 69"L	DB12-4714X69
DB 1.2 - 1-1/8" Thick x 47-1/4"W x 71"L	DB12-4714X71
DB 1.4 - 1-1/4" Thick x 47-1/4"W x 71"L	DB14-4714X71
DB 1.6 - 1-1/4" Thick x 47-1/4"W x 67"L	DB16-4714X67
DB 1.6 - 1-1/4" Thick x 47-1/4"W x 69"L	DB16-4714X69
DB 1.6 - 1-1/4" Thick x 47-1/4"W x 71"L	DB16-4714X71
Split Steel Drive Anchors 1/4" x 3" - Box of 100	TAP8100B
Washers - 5/16" x 7/8" - Box of 100	F803572B
T-Bar - 1-1/32" T x 5-1/4" W x 71"L	DB-T12X71
T-Bar - 1-3/16" T x 5-1/4" W x 71"L	DB-T14X71
Poly 4' Brisket Board	BB-4
Cozy Cow Top Wear Cover	CM-CP7080
Poly Clean-Chute Funnel and Tube	
Poly Clean-Chute Funnel with Top and Bottom Collars	PCF
Clean Chute Tube - 17" x 500' Roll	CC8M17500
Clean Chute Tube - 19" x 500' Roll	CC8M19500
Clean Chute Tube - 21" x 475' Roll	CC8M21475
Poly Silo Hopper	
Small Silo Hopper	PSH-S
Medium Silo Hopper	PSH-M
Large Silo Hopper	PSH-L
Poly-Extension Pipe	PSH-1A
Extra-Long Guide Legs	PSH-18
Poly Scrapers	
10" Scraper	S10
24" Poly Barn Scraper	S24
30" Poly Barn Scraper	S30
48" Poly Barn Scraper	S48
Feed Carts	
7 Bu. Feed Cart - Air Tires	P7A-4W
11 Bu. Feed Cart - Air Tires	P11A-4W
14 Bu. Wide Feed Cart - Air Tires	P14A-4W
14 Bu. Narrow Feed Cart - Air Tires	P14A-4W-N
20 Bu. Feed Cart - Air Tires	P20A-4W
26 Bu. Feed Cart - Air Tires	P26A-4W
Manure Spreader	
23 Bu. Manure Spreader	MS23B
Harrows	
4' x 4' Harrow	H4X4
4' x 6' Harrow	H4X6
6' x 4' Harrow	H6X4
4' x 8' Harrow	H4X8
6' x 8' Harrow	H6X8
8' x 8' Harrow	H8X8
10' x 8' Harrow	H10X8
12' x 8' Harrow	H12X8
14' x 8' Harrow	H14X8
8' - 3 Point Lift	HL8
10' - 3 Point Lift	HL10
12' - 3 Point Lift	HL12
14' - 3 Point Lift	HL14
LOYAL POLY DUMP TRAILER	
ATV Poly Dump Trailer - 20 cu. Ft/1500 lb. capacity	DT1500BL

This image shows a blank sheet of white paper with horizontal ruling lines. The lines are evenly spaced and extend across the width of the page. There are no margins, text, or other markings on the paper.

Roth Mfg. Co.
P.O. Box 248
Loyal, WI 54446

ATV Dump Trailer



- Thick-wall poly (black) – excellent cracking and puncture resistance
- Poly is ribbed for extra rigidity
- Solid-aluminum rails (2"W x 1.5"H) molded into poly... for super-strong bed.
- Sturdy, powder-coated, steel frame
- 18" x 9.5" wide, knobby-floatation tires roll easy... help protect lawns
- 4-bolt wheel hubs with greasable, tapered-roller bearings...for heavier loads
- 1.25" solid-steel axle
- 2" ball coupler