

2026
Product Catalog

ROTH

EQUIPMENT & SUPPLIES



ROTH
EQUIPMENT & SUPPLIES

From Dawn to Done.

Table of Contents

<u>Item</u>	<u>Page #</u>	<u>Item</u>	<u>Page #</u>
About Us.....	3	Item Descriptions.....	26
Buddy Hutch.....	12	Manure Spreader	24
Single Calf Hutches.....	4-5	Mats and Accessories	14-16
Calf Housing Accessories.....	13	Open-Air Flex-Pen	7
Clean Chute Tube	19	Poly Clean Chute Funnel.....	19
Conveyor Belting.....	18	Poly Liner	20
Dual XL Hutch	10	Poly Scraper.....	22
Feed Cart.....	21	Replacement Chain	18
Flex Hutch	10	Silo Hopper	19
Flex Pen Options	8	Single Chain Elevator.....	17
Foot Bath.....	22	Starter Pen.....	9
Grain Feeder.....	9	Superior 33 Mattress.....	14
Group Hutch	11	Ultra-Flex Pen	6
Harrow	25	Vinyl-Strip Door	20
Hay Elevator.....	23		

Contact

ROTH EQUIPMENT AND SUPPLIES

CALL

1-800-472-2341

FAX

1-800-677-2341

EMAIL

info@loyal-roth.com

MAIL

P.O. BOX 248
Loyal, WI 54446

HOURS

M-F: 8:00 - 12:00 (CST)
12:30 - 4:30 (CST)

STOP IN

312 E. Industrial Drive
Loyal, WI 54446

Our Story Began in Loyal, Wisconsin

Family owned and operated since 1956

Roth Equipment & Supplies began as a small-town fabrication shop in Loyal, Wisconsin in 1956. What started with a few welders and a promise to do good work has grown into a trusted ag supply and farm equipment partner serving farmers, dealers, and distributors across the country.



Built on Hard Work and Honesty

In 1956, the Roth family opened a small manufacturing shop in Loyal, Wisconsin. They built their first pieces of farm equipment by hand: no-nonsense, dependable tools that stood up to the toughest jobs.

As word spread, so did their reputation for quality. Local farmers knew if it came from the Roths, it was built to last. That belief became the foundation for everything that followed.

Three Generations. One Promise. No Shortcuts.

Three generations later, the Roth family still leads with the same commitment that started it all: to do things the right way, not the easy way.

Each generation added something new: equipment innovation, stronger dealer partnerships, nationwide distribution, but the core never changed. Hard work. Honesty. Standing behind a job well done.



“We’ve always believed loyalty isn’t just a name. It’s how you do business.”

— TOM ROTH

The Values That Guide Our Work

Our values have carried us through every generation and every job. They shape how we work and how we treat the people who depend on us.

Keep things simple. The best tools don't need to be complicated.

Never take shortcuts. The right way is worth the time.

Hard work is honest work. That's how trust is earned.

Loyal is more than where we're from. To our customers, our people, and to our craft.

Single Calf Hutches

SL Calf Hutch



Deluxe Standard SL Calf Hutch

- Ideal for growth periods of 6 to 8 weeks
- Most popular calf hutch for weaned calves up to 8 weeks
- Easy to clean



Specifications:

Overall Size: 49"W
x 87"L x 55"H

Weight: 90 lbs.

EXL Calf Hutch



Deluxe Large EXL Calf Hutch

- Accommodates longer growth periods of 8 to 12 weeks
- Rear of the hutch stays drier and warmer on cool days, which provides better protection from wind, rain and snow



Specifications:

Overall Size: 62.5"W
x 97.5"L x 56"H

Weight: 119 lbs.



I feel that our calf program has been highlighted as one of the best in the country BECAUSE of the use of our AP hutches! We raise a Healthier calf that thrives in both an individual hutch and the group hutches. - Kelli Cull, Budjon Farms

Single Calf Hutches



All-in-1 Rear Door

Airflow is critical for calf health. The new All-in-1 Rear Door improves upon the previous 3-in-1 door.

- Increased air flow capacity by 82%
- 30% more access for bedding and feed
- Easy to open & close rear flap
- Door swings out of way (can be left open)



The Only Manger with Splash Guard

- Pail stoppers keep calves from knocking out pails
- Splash guard helps keep feed dry and water clean
- Manger bolts to inside wall, you choose location – side feed door or rear door

New Larger Opening for Bedding & Feed

- Door closes for complete weather protection
- Lift metal sliding latch to lower door cover and increase ventilation
- Vertical ribs provide calf safety and durability
- New larger 21" opening makes for easier access to rear of hutch

Stay-Open Side Door

- Group hutches side-by-side for faster feeding
- Alternate right or left side doors to reduce walking between hutches by up to 50%
- Side door is larger for easier access – wind won't blow open closed door

Ultra Flex-Pen

Stand-Alone Housing

- Simply transform from single to group housing
- New large rear rotary-vent provides optimal air flow
- New bi-swing door opens in and out
- Rear panel opens with easy removal of rod
- New glide points make setup and tear down quicker
- Choose from 5', 6', or 7' side panels
- Side panel air vents provide greater air-flow
- Visit us online to see full list of available accessories



Bottle and bottle holder sold separately.

Pair-house calves by simply removing the center panel and installing the crossbar



Large easy to grip handle



Mount pens to wall with optional wall-mount bracket



Open-Air Flex-Pen

New, open metal design allows greater visibility of calves and better air flow!



48" Width



Now available in two widths:

36" Width



More Visibility & Better Airflow!

The new Open-Air Flex-Pens offer all the same great benefits of the Ultra Flex Pen but are now available with metal fronts and backs. Both front and rear panels are made of high-grade galvanized steel which assists in better air circulation. The open design allows convenient viewing to better monitor your calves' health.



Just like the Ultra Flex-Pen, this system simply transforms from single to group housing. Side panels can be effortlessly detached and replaced by the Group Housing Crossbar to pair to calves in a larger pen. Plus, with 2 options for widths and 3 different length sizes, this system provides you with the most options to fit your setup perfectly!

- High-grade galvanized steel front panel with pails, pail rings and optional bottle feeding
- Slam latch keeps front door secure
- Bi-swing front door

Flex-Pen Options

36" Wire Front
AGRI-7129



48" Wire Front
AGRI-7127



48" Plastic Front
AGRI-7110



36" Wire Back
AGRI-7130



48" Wire Back
AGRI-7128



48" Plastic Back
AGRI-7108



Side Panel
AGRI-7105, AGRI-7106, AGRI-7107



Group Housing Crossbar
AGRI-7113, AGRI-7114, AGRI-7115



Bottle Holder (Plastic Pen)
AGRI-7124



Bottle Holder (Metal Pen)
AGRI-7024

Back Wall Mount
AGRI-7012



Starter Pen

- Ideal for new born calves up to 1-week old before transitioning to pens or hutches
- Provides greater control over monitoring calf health
- Easier to teach calves to drink properly
- Top and bottom airflow vents
- Molded in one piece
- Made from high-impact polyethylene
- Easy to clean
- Elevated & moveable pens can be flipped up for better cleaning
- 10-year limited warranty
- Choice of: starter pen only, starter pen with slatted floor and either legs or wheels



Grain Feeder



- High-capacity feeder holds up to 33 lbs. of grain
- Adjustable internal feed control plate for precise feeding
- Versatile upper & lower brackets ensure the feeder remains in place, suitable for various hanging scenarios
- Ideal for tough farm conditions

Accommodates various mounting options thanks to the bottom bracket which is designed with multiple holes that ensures compatibility with multiple sized openings.



Flex-Hutch™

- Cleans and sanitizes easily, so you can put it back in service with zero downtime
- Simplifies daily chores such as bedding, feeding, watering and cleaning
- Place directly on ground or elevate on skids to optimize drainage
- Adjustable, hinged Flex Roof Cover™ opens in one easy movement
- Adjustable rear door allows single-motion ventilation control
- Unit includes 8-quart buckets, and pail holders
- 10-year manufacturer's limited warranty

Two-Unit Flex-Hutch



Bottle and bottle holder sold separately.

Three-Unit Flex-Hutch



Bottle and bottle holder sold separately.

Easy to Open Doors

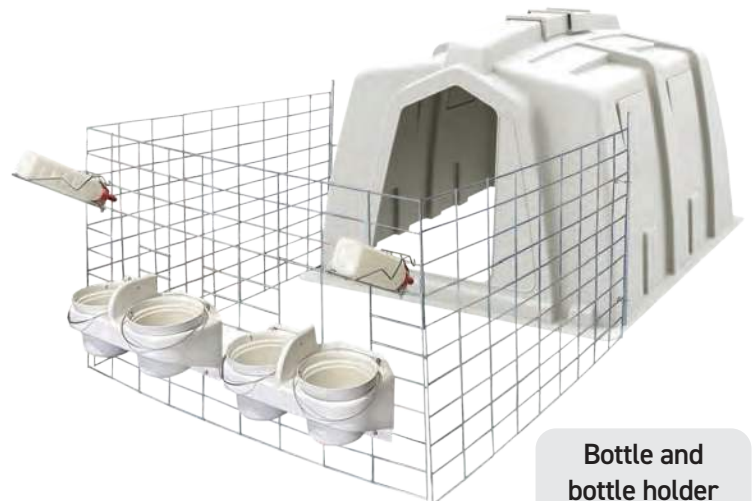


Single Motion Rear Vents



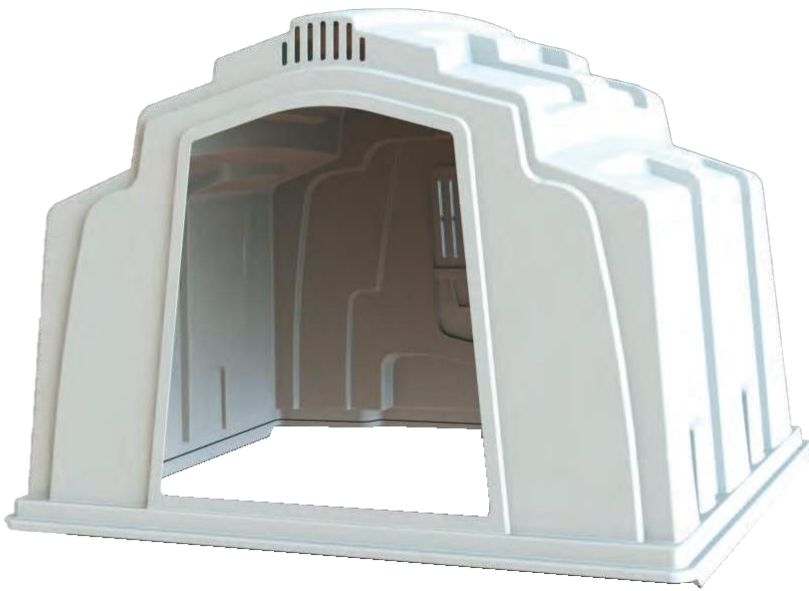
Dual XL Hutch™

- Larger hutch ideal for pair-raising calves
- Promotes companionship and competitiveness to help achieve optimal growth



Bottle and bottle holder sold separately.

Group Hutch



Features

- Designed to ease transition from individual to group housing
- Ideal for 4-6 weaned calves
- Calves can remain in group hutch up to 500 lbs. (5-6 months old)
- Swing-Up rear bedding door makes it easy to add bedding and control ventilation
- One-piece design makes it easy to assemble
- Different sized pen systems available to fit your needs

Specifications

- Outside Dimensions: 106"W x 89"L x 75"H
- Inside Dimensions: 100"W x 81"L x 75"H
- Weight: 250 lbs



Group Hutch Accessories

Narrow Pen System



Wide Pen System



Lift Kit



Hook Over Trough



Buddy Hutch

Features + Benefits

- For Calves 0-14 weeks old
- Calves can be housed together or separate, based on your preference
- Modified Group Hutch helps newborn calves accelerate growth
- Help reduce stress on calves through pair raising
- Helps facilitate increased socialization and promote solid feed intake



Features

- Multi-positional awning provides shade and protection from weather
- Comes standard with 4-pails, 4-pail rings, awning, swing up doors, and rear grid guard

Specifications

- Outside Dimensions: 106"L x 90"W x 80"H
- Inside Dimensions: 101"L x 86"W x 79"H
- Weight: 315 lbs



Calf Housing Accessories

EXL/SL Hutch Accessories

Storm Door



PVC Pipe Front Enclosure



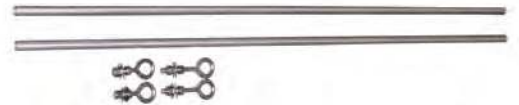
Weather Cover and Pail Manger



Tether Cable Kit



Fence Attachment Hardware



Other Accessories

2, 3, 4 Qt. Bottles



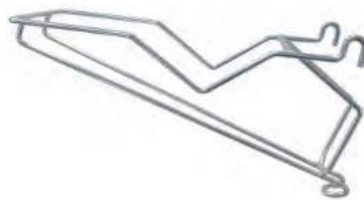
8 Qt. Pail



Pail Ring



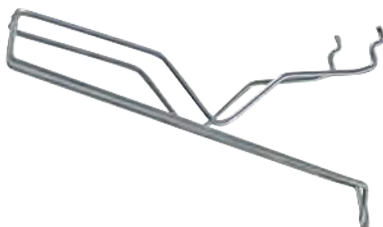
Wire Bottle Holder



Plastic Bottle Holder



Wire Bottle Holder (Flex Pen)



Starter Bowl



Superior 33 Mattress



For Tie-Stalls and Free-Stalls

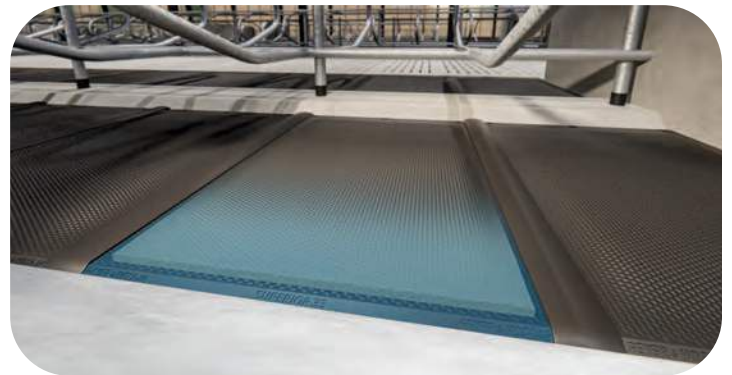
Give your cows the best rest they've ever had! Introducing the Superior 33 Mattress. Designed around giving your cows the most comfortable and supportive surface to stand and lie down on. Superior 33 helps reduce the likelihood of hoof problems and hock injuries. Also, this mattress helps maximize your farm's productivity, as more comfortable cows produce more milk! Call or email us today to learn how this mattress can help your cows' productivity and your farm's bottom line!



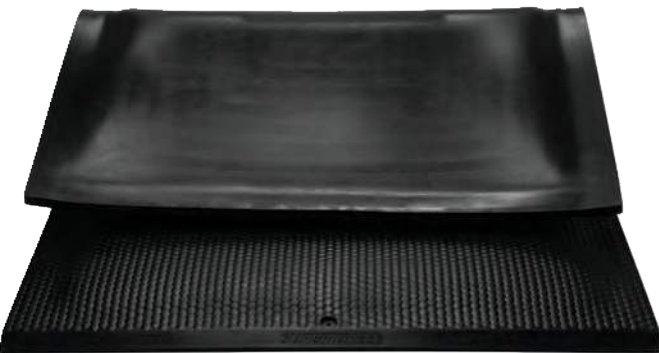
Features & Benefits

- 30MM of high-quality foam enclosed in a tightly sealed rubber mat allows for a 1-piece mat that is both durable and extremely soft
- Innovative combination of foam and robust rubber materials guarantees superior resting comfort
- Mattress provides up to 28MM of deflection
- Thermal insulation properties translate into maintaining the correct body temperature, which increases productivity

- Non-slip structure provides stability to reduce the likelihood of injury
- The design and simple installation make it easy to keep the mattress clean
- Non-slip structure provides improved stabilization to reduce the likelihood of injury
- Mat size: 48" x 72"
- Tie-stall limited warranty: 5-year prorated
- Free-stall limited warranty: 10-year prorated



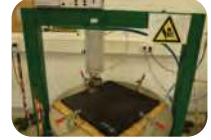
Premium Cow Comfort at an Affordable Price!



G&H Cow Mats



- Cow mats designed and manufactured from one of the largest rubber manufacturers in Europe
- Mats feature special anti-slip surface design – superior traction
- Simple installation – only requires 3-anchors (on front end)



- Mats are DLG tested and certified – sets standards for mats
- Special tests simulates up to 10 years of use

G&H 1.2



- For tie-stalls and free-stalls – 67”, 69”, or 71”
- 1-1/8” thick, with pebbled top surface
- Beveled rear edge provides soft, safe, non-stumble design
- Advanced rubber formulation – increased cow comfort
- Ribbed bottom surface – better cushioning and softness
- Tie-stall warranty – 5-yr prorated
- Free-stall warranty – 10-yr prorated

G&H 1.4



- For free stalls – 48” width, available lengths – 48” x 71”
- 1-1/4” thick, with pebbled top surface – anti-slip
- Mild slope (rear 1/3 of mat) promotes drainage
- Ribbed bottom surface – better cushioning and softness
- Bottom sealing lips restricts entry of moisture and debris

- Tie-stall warranty – None
- Free-stall warranty – 10-yr prorated



G&H 1.6



- For tie-stalls and free-stalls – 48” width, available lengths – 67”, 69”, or 71”
- 1-1/4” thick, with pebbled top surface
- Advanced rubber formulation – increased cow comfort
- Softer cushioning feel, yet still strong and durable
- Bottom sealing lips restricts entry of moisture and debris
- Tie-stall warranty – 5-yr prorated
- Free-stall warranty – 10-yr prorated

Humane Rubber Mat



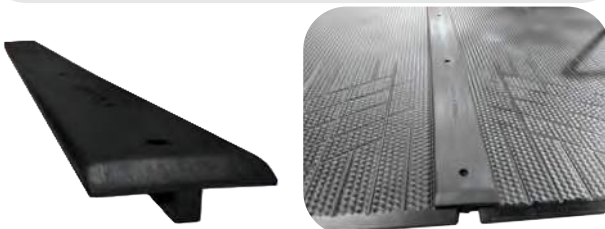
3/4" - 100% Rubber Mat

- Considerably heavier than most other mats at 106 lbs.
- Flat on both sides, clings to concrete
- Textured, non-skid, non-porous surface makes for better footing.
- Cushion comfort provides cow knee, hock and udder protection
- Easier to clean - no ribs to collect manure - reduces bacteria growth

Accessories

T-Bar Hold Downs

- Holds down sides of mats
- Seals and fills space between mats
- Prevents entry of moisture and fine bedding
- Easier stall cleaning
- Simple to install



Brisket Board

- Poly brisket boards are strong and don't splinter like wood
- Less expensive than poured cement brisket boards
- Smooth, rounded surface helps promote natural leg extension



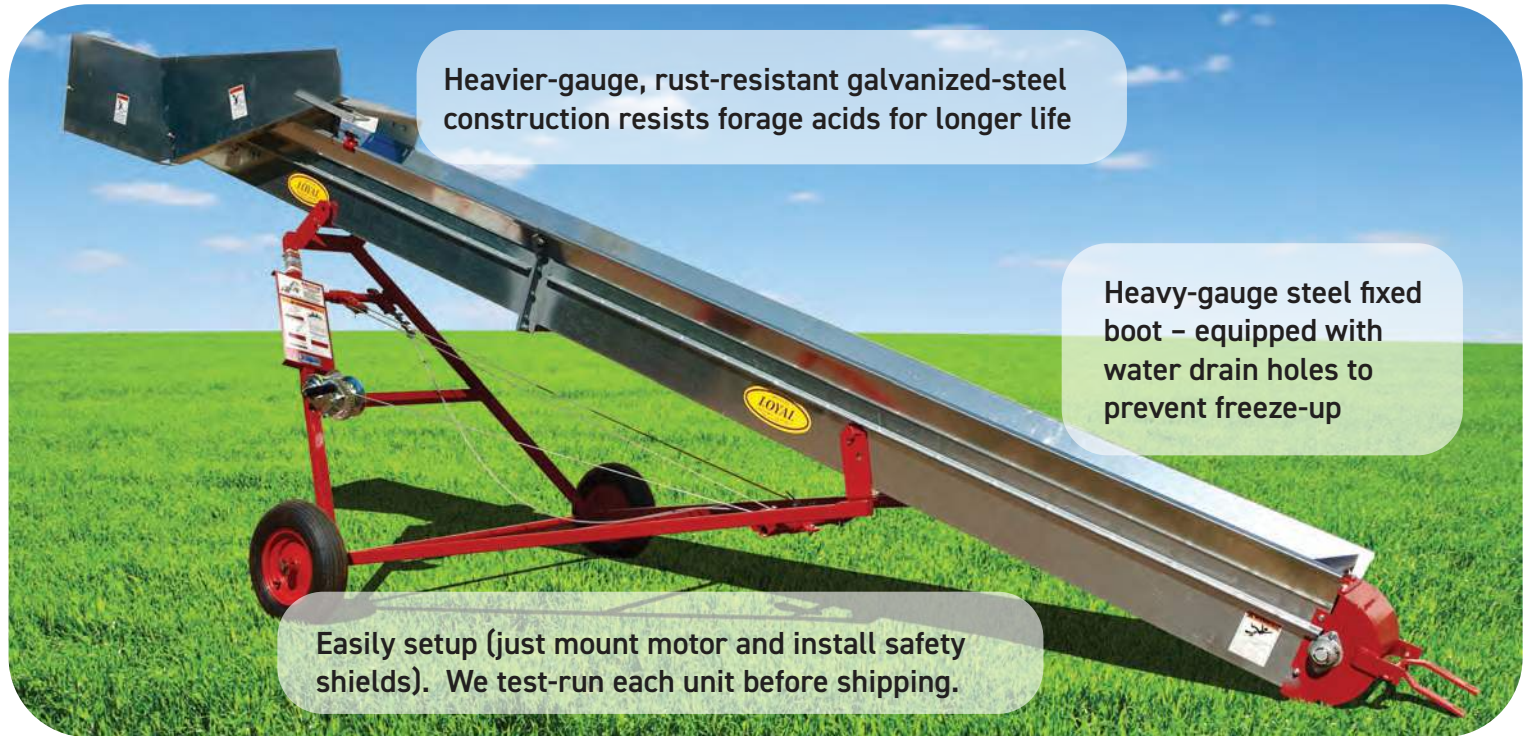
Cozy Cow Top Wear Cover



Tough Top Wear Cover

- For use over rubber filled mattresses
- Heavy-duty - nonwoven (high-strength)
- Water-repellent
- UV stabilized to resist sunlight (provides greater protection in free-stall applications)

Loyal 11" Silage Elevator



Heavier-gauge, rust-resistant galvanized-steel construction resists forage acids for longer life

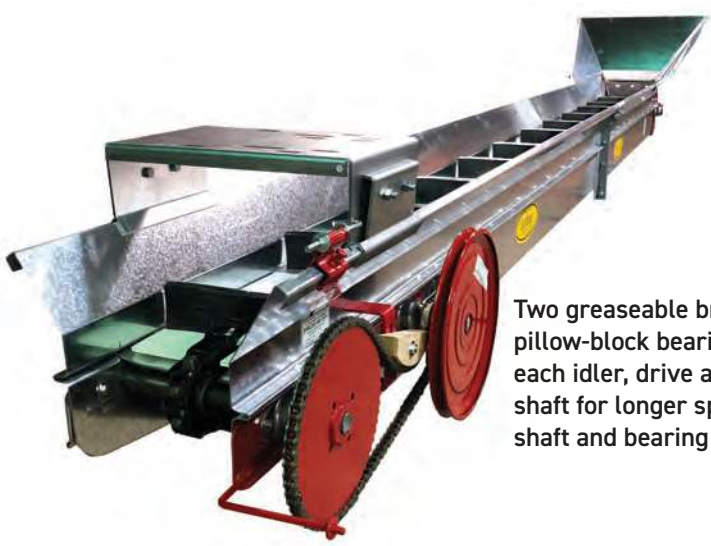
Heavy-gauge steel fixed boot – equipped with water drain holes to prevent freeze-up

Easily setup (just mount motor and install safety shields). We test-run each unit before shipping.

- Loyal elevators are preferred for their rugged but simple construction – they provide economical and smoother, more trouble-free operation for years of hard use
- Sturdy, detachable or pintle conveyor chain is tempered hard for longer wear
- Heavy cast-iron, drive and idler shaft, conveyor-chain sprockets – sprocket design helps prevent material buildup between chain and sprocket
- Sliding motor mount may be set at any point along top elevator flange (underslung mounts also available)



E-Z Open Cleanout Hole with Swinging Door provides quick access to boot



Two greaseable bronze pillow-block bearings on each idler, drive and cross shaft for longer sprocket, shaft and bearing life

- Great For:**
- Silage and Haylages
 - Small Grains and Coarse Ground Feeds
 - Do not position elevator at an angle greater than 45°
 - Whole Ear Corn
 - Wet Shell Corn (Whole or Ground) and Ground Ear Corn
 - Meals
 - Do not overload, especially for soybean meal
 - Manure
 - Canning Waste
 - Saw Mill Saw Dust Shavings

Replacement Conveyor Chain

Pintle Chain (with flights)



Detachable Bale Elevator Chain (with flights)



Replacement Pintle Couplers



Steel Detachable Chain (less flights)



Pintle chain (less flights) 10-Foot Rolls



Replacement Detachable Couplers

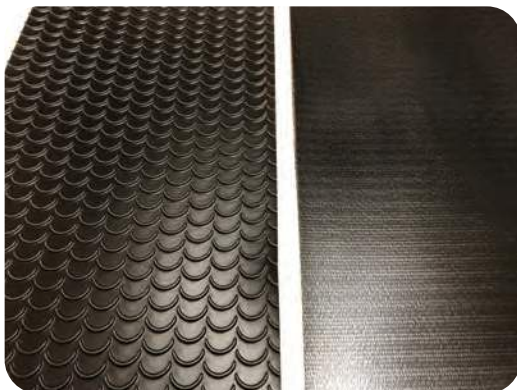


Steel Detachable Chain (with flights)



We've seen chain with a very-low tensile strength being marketed. The tensile strength on 667H chain we had tested was only 5,500# versus 9,500# on the chain that we sell.

Conveyor Belting



- Smooth or crescent belting
- Low temp rated - to minus 40°
- Greater chemical and cracking resistance than PVC

Poly Clean – Chute Funnel



- Simple to install in doorway (with clean-chute tube all the way to bottom of silo chute)
- Smooth and slick – won't plug
- Super-tough poly funnel won't rust or crack – even at extreme temperatures.
- UV stabilized to resist sunlight
- More durable than fiberglass
- Flange can be easily cut with any wood-type saw to fit your silo door

Clean Chute Tube



- Thicker 8 mil. (heavier than lighter 6 mil.) for better rip resistance... longer life.
- Fits up to 13" discharge tube

Poly Silo Hopper



- Directs silage and haylage into conveyor, cart or mixer
- Prevents feed losses
- Ends problems from flying material
- Eliminates feed hang-up on bottom silo rungs and rings, and on electrical equipment
- Handles high moisture corn and even haylage with no plugging

Poly Liner



- Many uses: mangers, feed bunks, conveyors, parlor & milkhouse walls, manure spreaders, gutters, and much more
- Available in rolls (up to 100' long) and sheets (10' long)
- Thickness 1/8", 3/16", and 1/4"
- Makes old mangers, walls and equipment better than new
- Extends life of any new surface – protects from chemicals, moisture, and wear
- Will not harbor bacteria, keeps feed fresher longer.

Vinyl-Strip Door



- Overlapping, flexible vinyl strips, part easily – but just enough to let people, animals, and equipment through – then close automatically
- Clear vinyl – for safer 2-way visibility
- Light filters in easily – brightens building interior
- Use on any size opening... from your dog house or milk-room door... to your feed room, barn or machine-shed door (as high as 14' and any width)
- Excellent low-temperature flexibility
- UV stabilized to prevent yellowing and cracking
- Low cost... quick and simple to install
- Low maintenance... clean occasionally (individual strips can be quickly and inexpensively replaced if ever damaged)
- Thicker, heavy-duty vinyl – resists bruising – retains it's shape

Feed Cart

7 & 11 Bu. Carts are ideal for narrow alleys or sharp turns.

14 Bu. – 26 Bu. are wider and carry more feed or bedding.



7 Bu.



11 Bu.



14 Wide Bu.



14 Bu.



20 Bu.



26 Bu.

- High-strength polyethylene is lightweight and much more durable than plywood, steel or fiberglass
- Superior performance has been proven – used for years in heavy-duty industrial applications
- Excellent stress cracking and puncture resistance – even at extreme temperatures
- Special rounded-bottom design for faster unloading and dumping. No sharp corners or seams to catch forks, shovels or scoops.
- Carts quickly turn in a stationary circle on large, rugged, swivels with grease fittings
- Easier to sanitize – slick, smooth surface both inside and out, wipes or washes clean in minutes

24" Poly-Tuf Feed Carts

- Rolls easier than a smaller wheel cart over uneven floors, especially with heavier loads
- Much easier to push
- Big, heavy duty air tires (tube-type)
- Thicker, 3/8" dia., solid, welded spokes...won't rust or bend from animal contact, unlike lighter wire spokes



20 Bu.

Loyal Poly Footbath



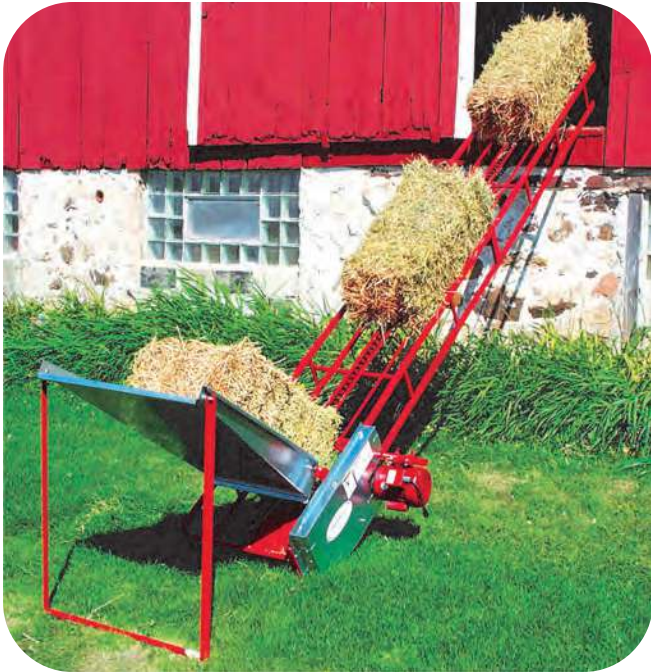
- Quick and easy way to clean and disinfect cattle's feet
- No wood frame needed – self-supporting
- Cross-rib, safety-grip bottom opens hooves wider, helps with faster healing
- Washing action of footbath removes damaging material from feet – helps prevent buildup of dirt and manure between cleats
- High-density, black, all poly – won't rust, rot, puncture or crack, even at extreme temperatures
- Available in two sizes: 32" x 78" x 6" & 54" x 84" x 6"

Loyal Poly Scraper



- High-strength, UHMW poly is lighter and more durable than steel
- Oversize lightweight 8" x 30" blade is a real work-saver for cleaning floors and walkways
- Poly is quieter - no steel-clatter noise to disturb cows
- Ideal for snow – slick, non-porous surface helps prevent snow from sticking to blade – rolls right off
- Extremely tough – resists heat, cold, sunlight and warpage
- Poly's superior performance has been proven – used for years in heavy-duty industrial applications
- Excellent stress cracking and puncture resistance – even at extreme temperatures
- Widths available – 10", 24", 30", 48"

Hayrite Bale Handling System



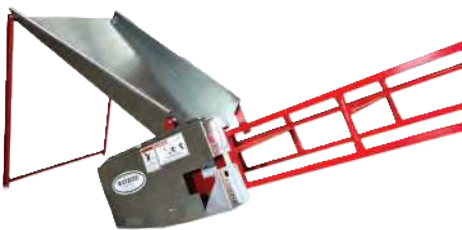
- Choose from either standard duty (18 ga.) or extra heavy duty (15 ga.) elevators
- Custom make your own bale handling system to fit your specific needs
- Basic elevator includes a drive unit, plus an end section with sprocket and chain tightener
- Basic Elevator can be lengthened by adding interchangeable 4' or 8' long extensions.
- Chain equipped with raised links every 24" for more positive movement
- Bronze, pillow-block bearings on drive unit – self-aligning with grease zerks
- Permanently-lubricated, sealed ball-bearing idler sprockets
- Powder-coated bright red finish – for longer life

Heavier, more dependable return-chain guides. Prevents sagging, catching, twisting and stretching – increases chain life.



Conveyor-chain track has exclusive double-formed-bend design for extra rigidity. Prevents sagging and bending common with other single formed-bend tracks.

Full Line of Accessories Available



Bale Chute Pan – 4'

Hinges to elevator, rests on its own stand or tips back against wagon or truck for easy unloading. Made of heavy, galvanized steel.



Bale Chute (Grate Type – 6')

Hinges to elevator – tips back against wagon or truck for easy unloading. Long-tapered design automatically lines up each bale to prevent them from tipping or turning while on elevator.



Transport

Engineered for better balance and greater strength – now you can move your elevator with ease to exactly where you want it. Tapered roller bearings – speed up to 20 MPH.

Loyal 23 Bu. Manure Spreader

Makes manure disposal faster and easier, can cut stall cleaning time by up to 50%!

At 46.5" wide, the spreader fits through most doorways and can be pulled right to the stall for loading.



- No belts to slip – apron chain is ratchet-driven by one wheel... beater is chain-driven by opposite wheel
- Simple to operate – up front controls for apron chain and beater
- Well balanced – easy to move by hand
- Ideal for 1 – 6 stalls
- Spreading takes about a minute depending on load and speed
- Ground driven (no-PTO)
- Any 10 HP garden tractor can pull

'Bear-claw' beaters quickly shred and spread all types of manure (including that mixed with straw or hay), plus shavings, grass clippings and compost.

Dimensions

Weight: 455 lbs.
Overall Length: 101"
Overall Width: 46.5"
Overall Height: 32.25"



Loyal Multi-Use Harrow

Use alone... or behind farm implements for 1-pass coverage, pull with your ATV, lawn tractor, tractor or pickup (only requires 1 HP per ft. of width for the mini-harrow... 2 HP per ft. for other models)



Ideal for Horse Owners & Hobby Farmers

- Aerate & dethatch pastures, lawns
- Loosen & smooth paths and driveways
- Break up & level heavy soil
- Prepare better seed beds
- Work-in fertilizer & seed
- Incorporate herbicides
- Harrow widths 4'-14'
- Harrow Lengths 4'-8'
- Scatter manure droppings
- Special design prevents tines from spreading apart in center – heavy residue is quickly surfaced without clogging or bunching

Optional 3-Point Lift

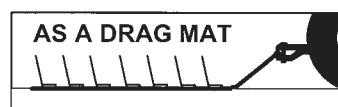
- Enables harrow to be quickly and easily moved to & from fields
- Allows operator to back up with harrow
- Easy to attach & store
- Includes tubular-steel frame, chrome-plated chain lengths and required hardware (shipped unassembled)
- Minimum harrow length of 8' required for 3-point lift



Pull forward, with tines pointed slightly back



Pull backwards, with tines pointed further back



Turn over



Rake & smooth in 1 pass. Sections work independently

Item Descriptions & Numbers

Calf Hutches	
EXL Calf Hutch	EXL-LEFT
	EXL-RIGHT
SL Calf Hutch	SL-LEFT
	SL-RIGHT
Group Hutch	AGRI-4033
2-Unit Flex Hutch	AGRI-8002
3-Unit Flex Hutch	AGRI-8001
Buddy Hutch	AGRI-4060
Dual XL Hutch	AGRI-1047
Calf Hutch Accessories	
SL Storm Door	AGRI-2062
EXL Storm Door	AGRI-1062
SL PVC Pipe Enclosure	AGRI-2041
EXL PVC Pipe Enclosure	AGRI-1041
Weather Cover	AGRI-4013
Fence Mount Double Bucket Manger	AGRI-1048D
SL Tether Cable Kit	AGRI-2017
EXL Tether Cable Kit	AGRI-1017
Fence Attach. HDWE	AGRI-2036
SI Bottle Holder	AGRI-2002
Plastic Fence Mount Bottle Holder	AGRI-2003
Wire Fence Mount Bottle Holder	AGRI-7024
2-Qt. Bottle	AGRI-1070
3-Qt. Bottle	AGRI-1071
4-Qt. Bottle	AGRI-1074
8-Qt. Replacement Pail	AGRI-1049H
Large Starter Bowl - 11" Top Diameter	AGRI-1066
Group Hutch Accessories	
Narrow Pen System 108"W x 192"L	AGRI-1033F
Wide Pen System 138"W x 192"L	AGRI-1034F
Hook Over Trough	AFP-800
Lift Kit	AGRI-4034N
Buddy Hutch Accessories	
Weather Cover Extension	AGRI-4077
Center Panel	AGRI-4078
Lift Kit	AGRI-4034N
Calf Pens	
Plastic Front Panel	AGRI-7110
Plastic Rear Panel	AGRI-7108
5' Side Panel	AGRI-7105
6' Side Panel	AGRI-7106
7' Side Panel	AGRI-7107
48" Metal Front Panel	AGRI-7127
48" Metal Rear Panel	AGRI-7128
36" Metal Front Panel	AGRI-7129
36" Metal Rear Panel	AGRI-7130
Calf Pen Accessories	
5' Crossbar	AGRI-7113
6' Crossbar	AGRI-7114
7' Crossbar	AGRI-7115
Wall Mount Channel	AGRI-7012
Back to Back Bracket	AGRI-7126
Ultra Flex Bottle Holder	AGRI-7124
Hanging Grain Feeder	AGRI-2444
Starter Pen	
Starter Pen	AGRI-6000B
Plastic Slatted Floor	AGRI-6001
Metal Legs for Elevated Starter Pen	AGRI-6003-KIT
Wheels for Moveable Starter Pen	AGRI-6004-KIT

Mats	
Superior 33 Mattress	GH33-4714X71
Humane 3/4" Mat - 48" x 72"	MAA8200
Nail Anchors 1/4" x 2" Box of 100	TAP8204B
DB 1.2 - 1-1/8" Thick x 47-1/4"W x 67"L	DB12-4714X67
DB 1.2 - 1-1/8" Thick x 47-1/4"W x 69"L	DB12-4714X69
DB 1.2 - 1-1/8" Thick x 47-1/4"W x 71"L	DB12-4714X71
DB 1.4 - 1-1/4" Thick x 47-1/4"W x 71"L	DB14-4714X71
DB 1.6 - 1-1/4" Thick x 47-1/4"W x 67"L	DB16-4714X67
DB 1.6 - 1-1/4" Thick x 47-1/4"W x 69"L	DB16-4714X69
DB 1.6 - 1-1/4" Thick x 47-1/4"W x 71"L	DB16-4714X71
Split Steel Drive Anchors 1/4" x 3" - Box of 100	TAP8100B
Washers - 5/16" x 7/8" - Box of 100	F803572B
T-Bar - 1-1/32" T x 5-1/4" W x 71"L	DB-T12X71
T-Bar - 1-3/16" T x 5-1/4" W x 71"L	DB-T14X71
Poly 4' Brisket Board	BB-4
Cozy Cow Top Wear Cover	CM-CP7080
Poly Clean-Chute Funnel and Tube	
Poly Clean-Chute Funnel with Top and Bottom Collars	PCF
Clean Chute Tube - 17" x 500' Roll	CC8M17500
Clean Chute Tube - 19" x 500' Roll	CC8M19500
Clean Chute Tube - 21" x 475' Roll	CC8M21475
Poly Silo Hopper	
Small Silo Hopper	PSH-S
Medium Silo Hopper	PSH-M
Large Silo Hopper	PSH-L
Poly-Extension Pipe	PSH-1A
Extra-Long Guide Legs	PSH-18
Poly Scrapers	
10" Scraper	S10
24" Poly Barn Scraper	S24
30" Poly Barn Scraper	S30
48" Poly Barn Scraper	S48
Feed Carts	
7 Bu. Feed Cart - Air Tires	P7A-4W
11 Bu. Feed Cart - Air Tires	P11A-4W
14 Bu. Wide Feed Cart - Air Tires	P14A-4W
14 Bu. Narrow Feed Cart - Air Tires	P14A-4W-N
20 Bu. Feed Cart - Air Tires	P20A-4W
26 Bu. Feed Cart - Air Tires	P26A-4W
Manure Spreader	
23 Bu. Manure Spreader	MS23B
Harrows	
4' x 4' Harrow	H4X4
4' x 6' Harrow	H4X6
6' x 4' Harrow	H6X4
4' x 8' Harrow	H4X8
6' x 8' Harrow	H6X8
8' x 8' Harrow	H8X8
10' x 8' Harrow	H10X8
12' x 8' Harrow	H12X8
14' x 8' Harrow	H14X8
8' - 3 Point Lift	HL8
10' - 3 Point Lift	HL10
12' - 3 Point Lift	HL12
14' - 3 Point Lift	HL14
LOYAL POLY DUMP TRAILER	
ATV Poly Dump Trailer - 20 cu. Ft/1500 lb. capacity	DT1500BL

Roth Equipment & Supplies
P.O. Box 248
Loyal, WI 54446



From Dawn to Done